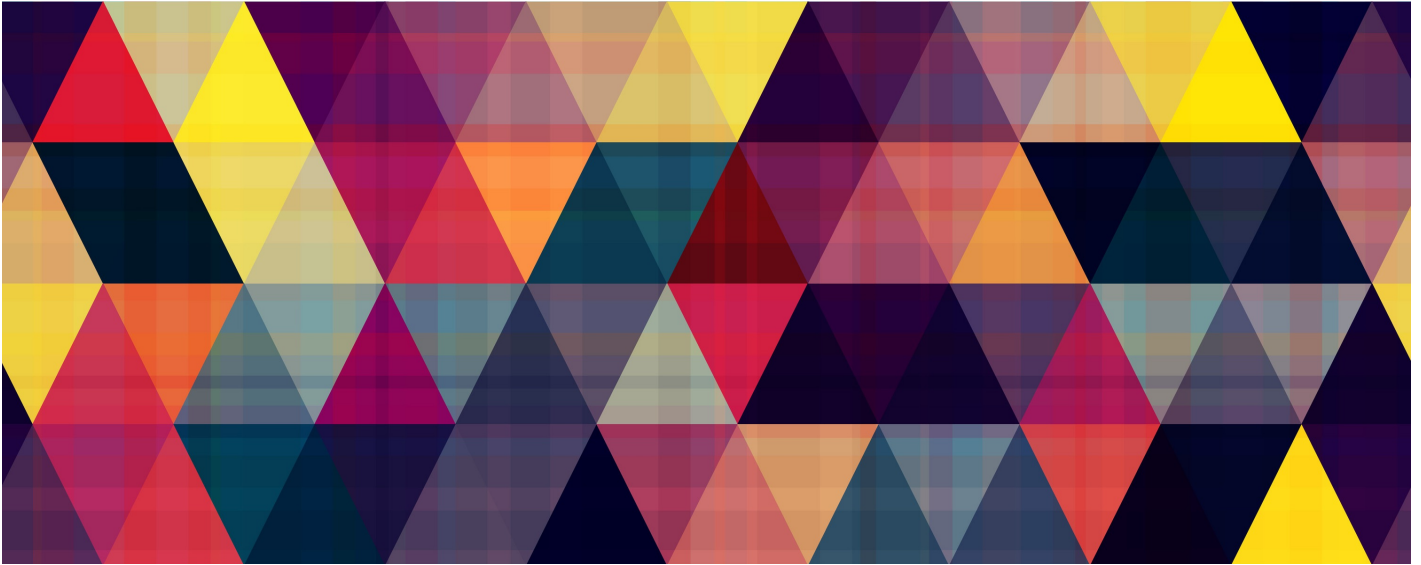


DIVERSITY OF SOCIAL COGNITION



Workshop at the University of Cologne, Germany

Keynote Speakers:

Gary Bente, University of Cologne

Oliver Davies, King's College London

Nathalie George, University Pierre and Marie Curie

Martine Grice, University of Cologne

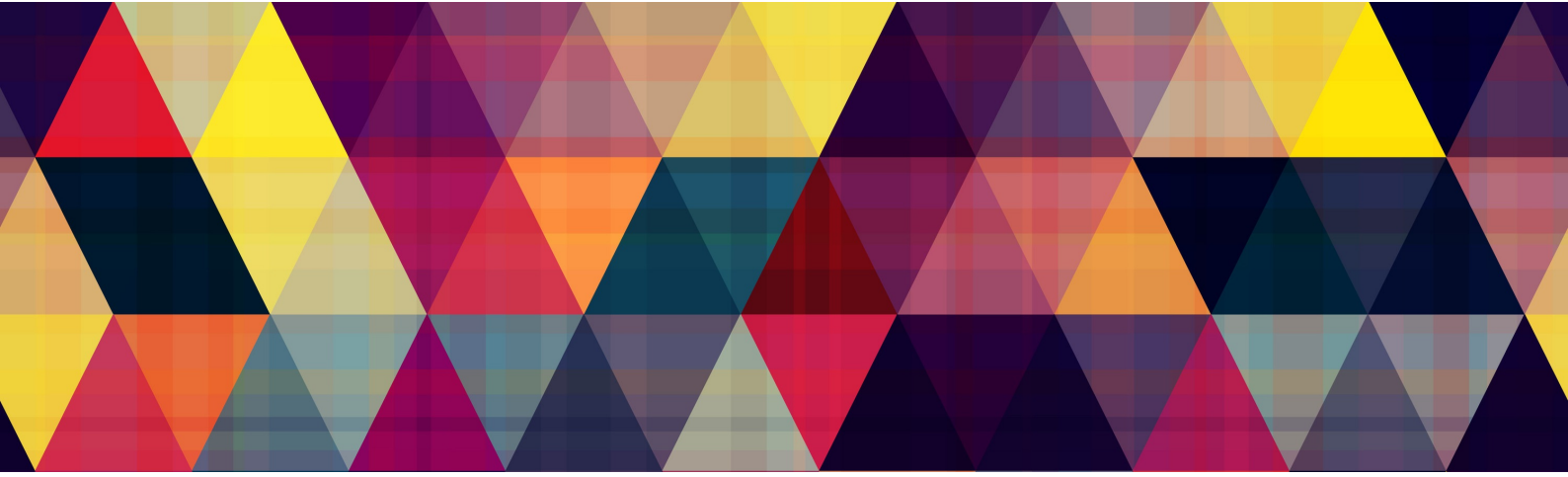
Antonia Hamilton, University College London

Shihui Han, Peking University

Shinobu Kitayama, University of Michigan

Kai Vogeley, University Hospital of Cologne

www.diversityofsocialcognition.weebly.com



Welcome

Social cognition is the capacity to process socially relevant information in order to adapt to complex affordances created by our social environment. It is an essential component of human communication and interaction.

However, the enormous variations of social behaviour and diversity in human communication often enough challenge our capacity to understand others and can lead to misunderstandings in social encounters. Although research activities from many different fields have identified a variety of factors (e.g. age, gender, culture, language, psychopathology and norm deviance) as influential sources of variance in social information processing, systematic interdisciplinary efforts are still missing.

It is the goal of this workshop to create a fruitful ground for dialogue and exchange and to generate an international and interdisciplinary platform, which would allow the systematic study of causes, effects and conditions of variance in social cognition. The workshop will focus on the tension between universality and variability of social cognitive processing and its neural foundations and aims to develop an advanced understanding of previously unaddressed aspects of social cognition.

Organizers

Alexandra Georgescu, University Hospital of Cologne
Kai Vogeley, University Hospital of Cologne & Research Center Jülich
Gary Bente, University of Cologne

Sponsors

This event is organised by the University of Cologne and the University Hospital of Cologne and sponsored by the University of Cologne UoC Forum - German Excellence Initiative

SUNDAY, 26th July

12:00 – 12:45

Registration & Welcome Lunch

12:45 – 13:00

Introduction: Alexandra Georgescu, Gary Bente & Kai Vogeley, University of Cologne

13:00 – 14:00

Keynote Speaker: [Shihui Han](#), Peking University:
A Culture-Behavior-Brain Loop Model of Human Development

14:00 – 14:30

Coffee and Tea

14:30 – 16:00

Short Talk Session/Early Career Researchers:

1. [Eileen Oberwelland](#), University Hospital of Aachen & Research Center Jülich: Combining Interactive Eye-Tracking and fMRI to Investigate the (A)Typical Developmental Trajectories of Joint Attention
2. [Rachel Brezis](#), The Interdisciplinary Center Herzliya, Israel: Self-Descriptions by Individuals with ASD in New Delhi and Los Angeles
3. [Arran Reader](#), University of Reading: Testing the Validity of Video Stimuli in Imitation

16:00 – 16:30

Coffee and Tea

16:30 – 17:30

Guided Poster Session

17:30 – 18:30

Keynote Speaker: [Gary Bente](#), University of Cologne:
Acting In Sync: Creation and Perception of Rapport across Cultures and Gender

MONDAY, 27th July

9:00 – 9:30

Coffee

9:30 – 10:30

Keynote Speaker: [Antonia Hamilton](#), UCL: Mechanisms of Mimicry – How and Why Do People Spontaneously Copy

10:30 – 11:30

Keynote Speaker: [Shinobu Kitayama](#), Michigan University:
Self, Social Cognition, and Health: A Bio-Cultural Perspective

11:30 – 12:30

Lunch and Poster Session

12:30 – 13:30

Short Talk Session/Early Career Researchers:

1. [Dong-Seon Chang](#), Max Planck Institute for Biological Cybernetics Tübingen: Visual Adaptation to Social Actions Across Cultures
2. [Meike Ramon](#), Catholic University of Louvain: How Culture Makes Us (S)Tick Together
3. [Jing Rachel Ma](#), University of St. Andrews: The Impact of Cultural Values and Appearance on Choice of Female Leaders

13:30 – 14:00

Coffee & Tea

14:00 – 15:00

Keynote Speaker: [Nathalie George](#), University Pierre and Marie Curie, Paris: Dynamic: Neuroimaging of Face and Social Facial Signal Processing

15:00 – 16:00

Keynote Speaker: [Martine Grice](#), University of Cologne:
Intonation and Asperger Syndrome

16:30

Social Evening

(Rhine boat trip at 18:00; conference dinner at 19:30)

TUESDAY, 28th July

9:00 – 9:30

Coffee

9:30-10:30

Keynote Speaker: [Oliver Davies](#), King's College London:
Tracing a Transformational Self: An Experiment in Neuroanthropology

10:30 – 11:30

Keynote Speaker: [Kai Vogeley](#), University Hospital of Cologne & Research Center Jülich: Neural Mechanisms of Social Information Processing in High-Functioning Autism

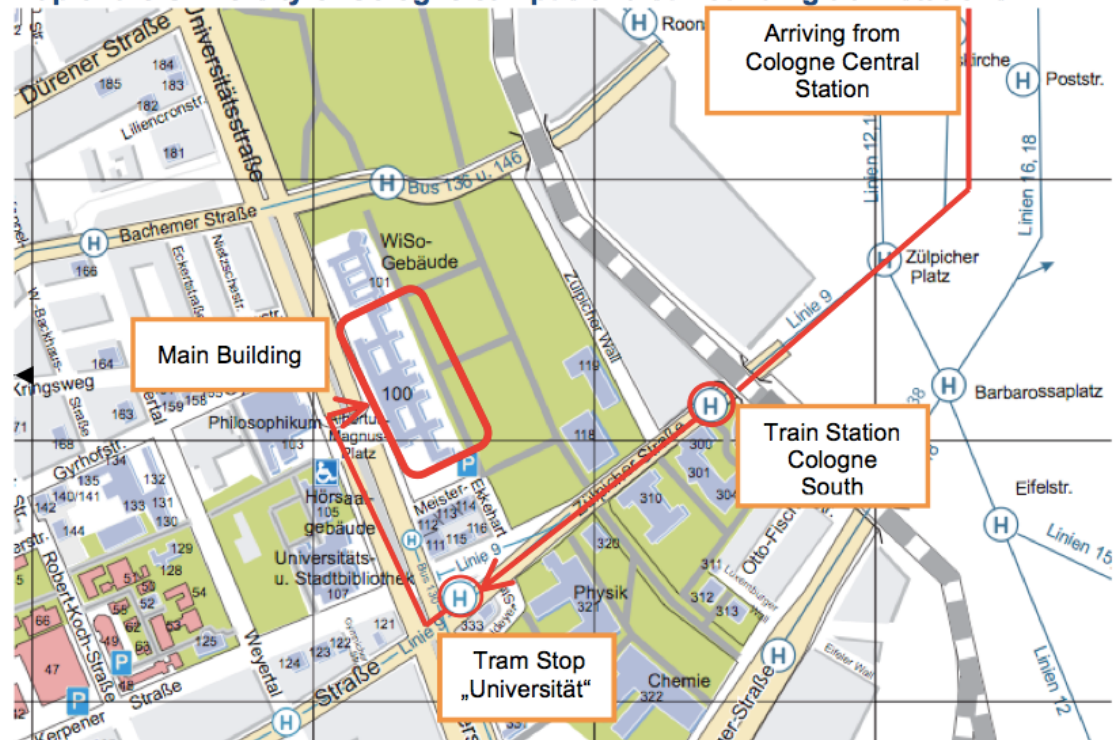
11:30 – 13:00

Wrap Up & General Discussion: Alexandra Georgescu, Gary Bente & Kai Vogeley, University of Cologne

Venue

University of Cologne, Main Building (Hauptgebäude)
Albertus Magnus Platz 1, 50932 Cologne
Room: "Neuer Senatssaal"

Map of the University of Cologne campus and surrounding tram stations:



OpenStreetMap

Arrival from the main building ('Hauptgebäude') of the University of Cologne to the workshop room (room: "Neuer Senatssaal")

